



## FOR IMMEDIATE RELEASE

Contact:

Karla Simpson Brown

[ksbrown@itc.edu](mailto:ksbrown@itc.edu)

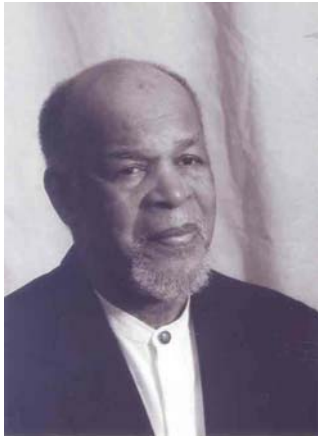
404.614.6394

Monica Peterson

[mlpeterson@itc.edu](mailto:mlpeterson@itc.edu)

404.614.6391

### **CHURCH TWINNING** **Is Ecumenism, Globalization and Partnership Involvement** **For the 21<sup>st</sup> Century?**



Atlanta, GA (March 30, 2010) The summer of 2010 the Interdenominational Theological Center will present a new study course titled the Introduction and Principles of Church Twinning by ITC Professor Dr. Marsha Snulligan Haney, Rev. Dr. Arthur Carson, Jr., pastor at Springfield Missionary Baptist Church in Atlanta, Georgia and a member of the ITC New Study Course Program and Committee and Rev. Dr. Sidney Holston co-founder Church Twinning International, Inc. This course will be incorporated into the Introduction to Missiology which is a required course.

The purpose of Church Twinning is to encourage congregations, though separated by culture and distance, to assist each other with the building of the church as a whole two by two. As a result of the commission by Jesus when he sent the disciples out two by two, according to Mark 6:7.

Additionally, this class intends to increase cultural awareness, and spiritual growth. "It combines economic interest and creates innovative programs and projects that further exchange cooperation and fellowship," says Dr. Holston. For those interested in taking the class, it begins on Monday, June 7 and continues through Friday, June 18, 2010, from 8:00 a.m. until 12:00 p.m.

For more information about this new course at ITC, visit the website at [www.itc.edu](http://www.itc.edu).

#### **About ITC**

ITC is one of the most unique training grounds in graduate theological education in Atlanta and is a consortium of six different denominational seminaries. Nowhere in the world is there found a consortium of this magnitude housing: Morehouse School of Religion (Baptist Affiliate), Gammon Theological Seminary (United Methodist Affiliate), Turner Theological Seminary (African Methodist Episcopal Affiliate), Phillips School of Theology (Christian Methodist Episcopal Affiliate), Johnson C. Smith Theological Seminary (Presbyterian Affiliate), C. H. Mason Theological Seminary (Church of God in Christ Affiliate) and all other affiliate denominations are part of the Richardson Ecumenical Fellowship.

###